

Kosovo Challenge Fund - Support Programme to vocational education and training (VET) in Kosovo

Project

**KCF 200007 - KOS Gjakove, Technical School "Kadri
Kusari", Gjakove, Kosovo**

Document title

Design Project– Short version for Contractor

Document date

July 2025



In cooperation with:

CES clean energy solutions GesmbH Schnbrunner Str.
297, 1120 Wien, Austria office@ic-ces.at | www.ic-ces.at

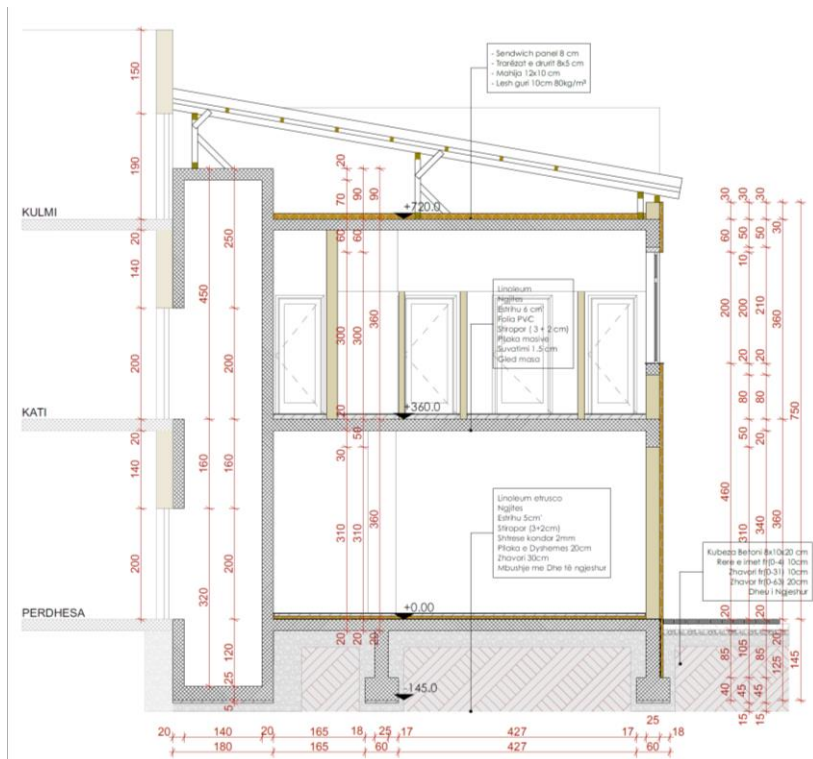
- 1 Architecture Project**
- 2 Construction Project**
- 3 Electrical Project**
- 4 Hyrdo project**
- 5 Mechanical Project**

Technical drawing of a reinforced concrete slab (P+1) showing reinforcement details. The drawing includes dimensions for slab thickness (10 cm), column spacing (80 cm), and reinforcement bar specifications (e.g., SHTYLLA 10x10, danat 2x14x5). A note indicates that the reinforcement is to be placed in the slab.

Architectural cross-section drawing of a building facade and interior. The drawing shows a two-story structure with a flat roof, multiple windows, and a central entrance. Dimensions are provided in centimeters. Key features include:

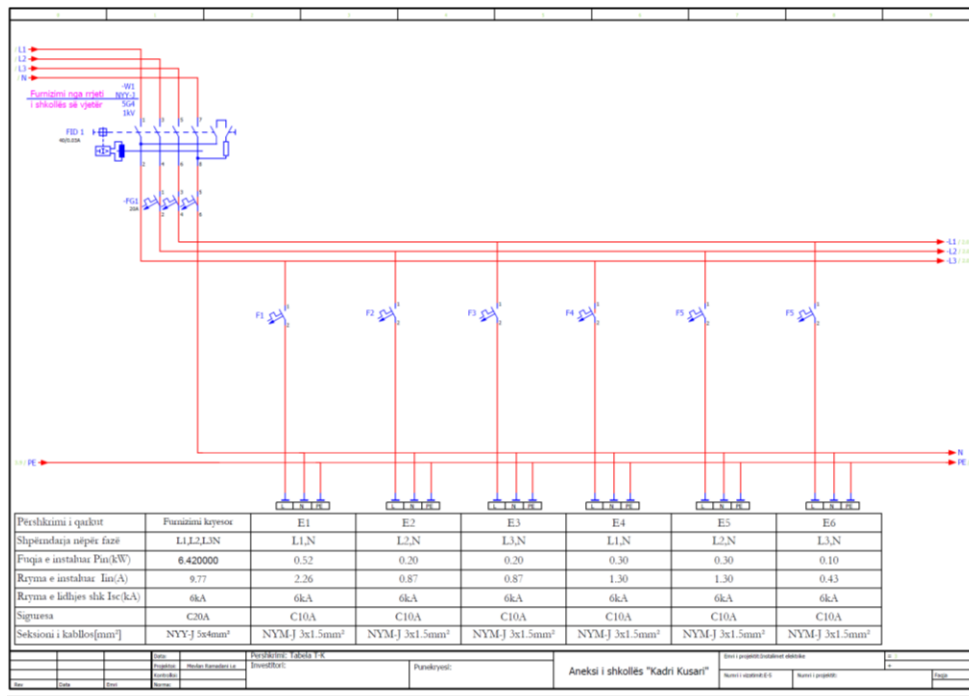
- Roof structure:** Sandwich panel 8 cm, Insulation 100 cm, Concrete slab 120 cm.
- Wall structure:** Brickwork 19 cm, Insulation 10 cm, Concrete slab 120 cm.
- Floor structure:** Concrete 10 cm, Insulation 10 cm, Concrete slab 120 cm.
- Interior details:** Kitchen area with a sink, stove, and refrigerator; living area with a sofa and coffee table.
- Dimensions:** Various dimensions are provided for the structure and interior spaces.

- **Sesion B-B**

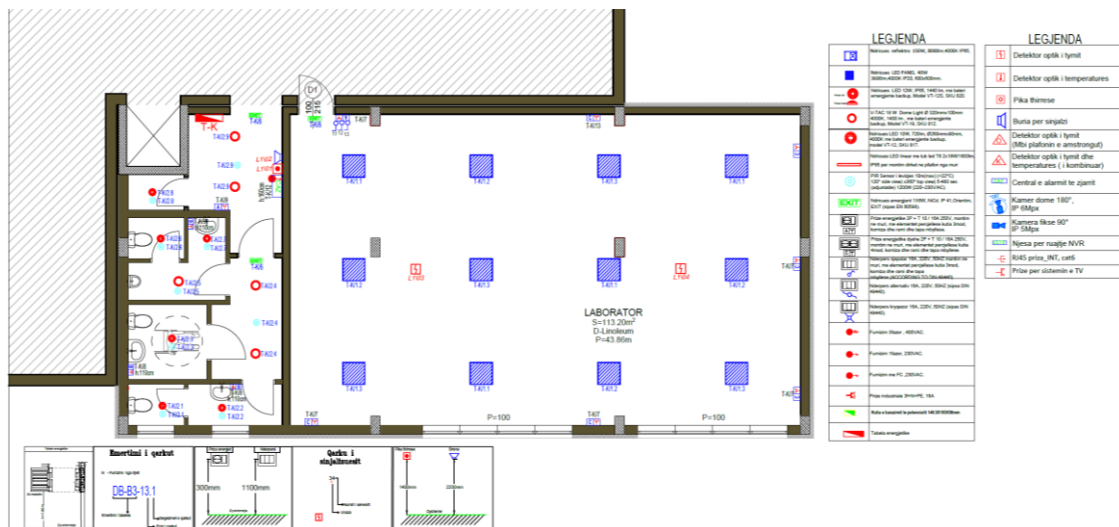


- **Basement Construction**

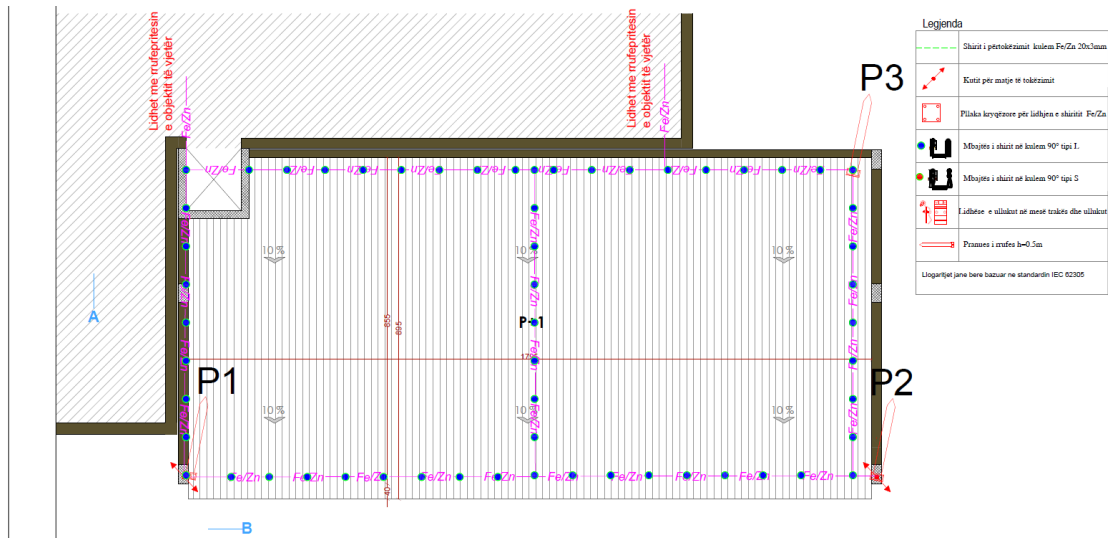




• Electrical Plan



• Lighter System



• Hydro System

